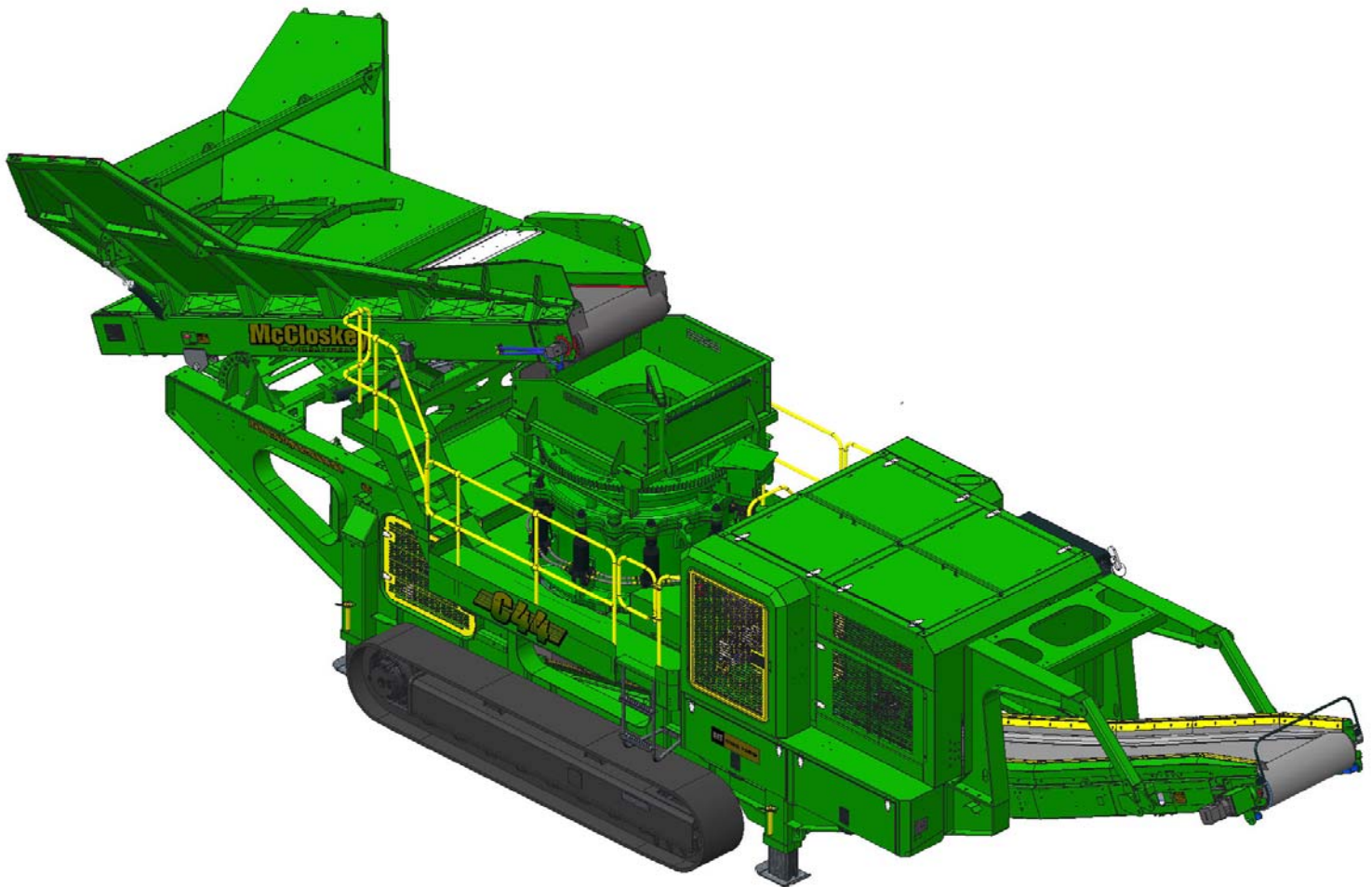




SPECIFICATIONS



McCloskey *C44V2*



DESCRIPTION

Heavy duty track mounted Crusher with following features:

- Telsmith 44SBS Cone c/w Anti spin system.
- 440Hp C13 Cat engine.
- Track or Track c/w Wheel bogie.
- Integrated hopper with folding rear door.
- I-beam plate fabricated chassis construction.
- Large gap between crusher discharge and main conveyor feedboot
- Open chassis design for ease of maintenance
- Fast setup time

DIMENSIONS AND WEIGHTS

Length - transport all models	16.02m (52' - 7")
Width - transport all models	2.9m (9' - 6")
Height - transport track	3.4m (11' - 2")
Weight - track	45,000 Kgs (99,000 lbs)

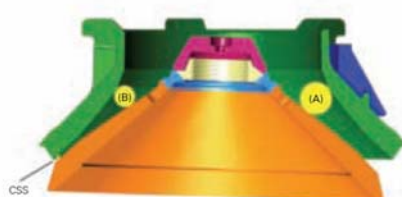
CAPACITIES

Diesel tank capacity	765 L (202 US gal)
Hydraulic tank capacity	1400 L (370 US Gals)

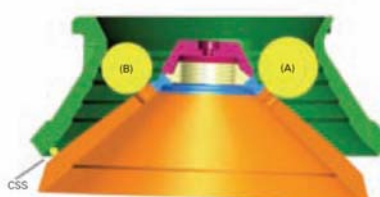
CRUSHING CHAMBER

Feed opening	914mm (36")
Crusher speed	672 rpm
Crusher Drive	Hydraulic – Direct drive
Min. opening	10mm (3/8") (Fine liner)
Max. opening	165mm (1 3/4") (Coarse Liner)
Cone weight	14,970kg (33,000 lbs)
Closed side setting adjustment	Hydraulic
Motor	Kawasaki axial piston 800cc/rev
Flow rate	608 Lpm (160 US gpm)
Level sensor	Ultrasonic

SBS CRUSHING CHAMBER



Typical "F" Arrangement



Typical "C" Arrangement

Model	Bowl	Recommended Minimum Closed Side Setting (CSS)		Feed Opening at Minimum Closed Side Setting			
				Open (A)		Closed (B)	
44 SBS	C- X-Coarse	1"	25 mm	8"	203 mm	6-1/2"	165 mm
	C- Coarse	3/4"	19 mm	5-7/8"	149 mm	4-1/4"	108 mm
	C- Medium	5/8"	16 mm	4-7/8"	124 mm	3-1/2"	89 mm
	F- Coarse	5/8"	16 mm	4-1/4"	108 mm	2-5/8"	67 mm
	F- Medium	1/2"	13 mm	3-3/4"	95 mm	2-1/4"	57 mm
	F- Fine	3/8"	10 mm	3-1/2"	89 mm	1-3/4"	44 mm

**FEEDER**

Feeder opening width	765mm (30")
Feeder drum crs.	6000mm (19' 8.2")
Drive	Hydraulic
Feeder belt width	1050mm (42")
Motor	Danfoss OMSS 125
Gearbox	Bonfig 809 W2 23.6:1
Flow rate	87.4 Lpm (23.1 US gpm)
Adjustable speed	Yes
Maximum speed	29 rpm

HOPPER

Length	6250mm (20' - 6")
Width	2460mm (8')
Material	6mm sides + 10mm Hardox liners

MAIN CONVEYOR

Stockpile height	3250mm (10' - 8")
Belt width	1050mm (42")
Belt spec	Plain 500/3 8+2
Drive drum dia.	350mm (13.7")
Tail drum dia.	270mm (10.6")
Motor	OMV630
Flow rate	68.4 Lpm (18.1 US gpm)
Maximum speed	108.5 rpm
Angle adjustable	YES
Quick release	YES

POWERUNIT AND HYDRAULICS

Engine	CAT C13
Engine power	328 kW (440 HP)
Engine speed	1900 rpm
Flywheel Pump 1	Kawasaki K5V200DP
LH PTO Pump 2	David Brown 5036 5023
RH PTO Pump 3	Pump 55058 011RV
Total system flow	798.4 Lpm (211 US Gpm)
Hydraulic tank capacity	1400 L (475 US Gals)
Hydraulic tank ratio	2.25 : 1
Hydraulic Oil cooler	2 off

**ELECTRICS**

Emergency stops	4 off, 2 feeder, 2 powerunit
Chassis cabling	Armored cable
Start Siren	YES - 10 sec delay
Control panel	Tedd colour screen
Engine shutdowns:	Low oil pressure
	High water temp
	Air filter blockage (selectable)
	Fuel contamination
	Low hydraulic tank level
Engine room light	YES
Radio control tracks	optional - Hetronic system
Pendant track control	YES - plugged in control cabinet

TRACKS

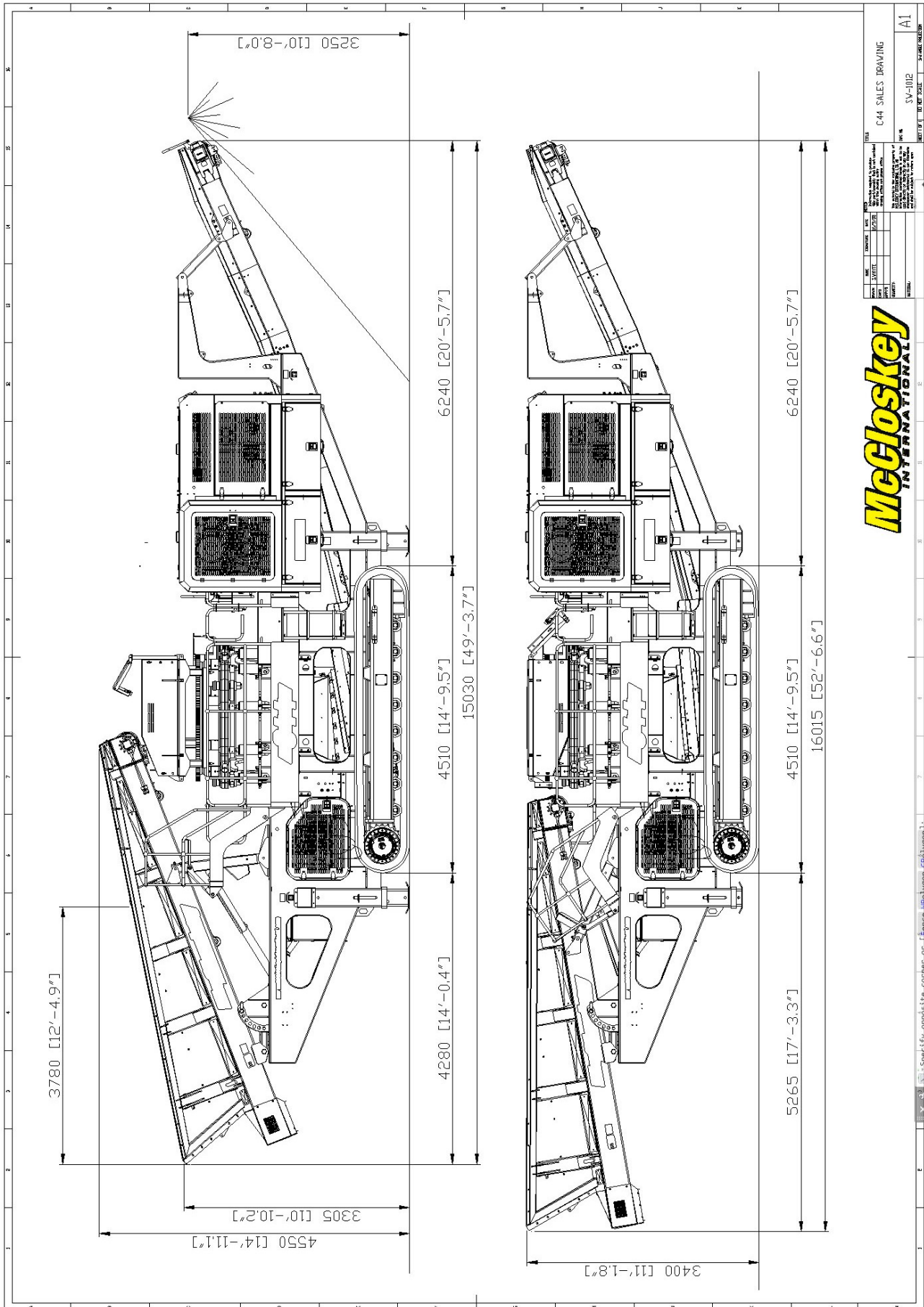
Width	500mm (19.7")
Length	3800mm (12' - 6") crs
Height	798mm (31.4")
Gearbox	Bonfiglioli 711
Ratio	153:1
Motor	Rexroth 90
Speed max	1.50 Kph (0.93 Mph)
Flow rate	138 Lpm (36.45 US gpm)
Dual speed	Variable high speed system
Attachment to chassis	Bolt On for quick change

OPTIONS

Roll-in bogie system
Main conveyor variable speed control
Interlock system
Hopper Extensions
Water Pump and dust suppression system
Coarse, Medium or Fine liners
Work lights
Belt scale

SAFETY FEATURES

External belt alignment points
External grease points
Engine safety shutdown systems
Full safety guarding for nip points
Hydraulic oil temp sensor
Fuel level sensor
Return filter sensor



All specifications are current as of this printing, but are subject to change