



## **PRODUCT CATALOGUE**

**2022**

**REDUCE >> REUSE >> RECYCLE**

# MB CRUSHER: ADVANCED, VERSATILE, TOUGH.

For over 20 years **MB CRUSHER** has been designing **and manufacturing** attachments for heavy equipment regardless of size. Perseverance and resilience led the company to invent the first jaw crusher for excavators. Investing in technology research contributed to the development of MB's products that can be installed on any carrier machine, turning them into real mobile crushers while improving the machine's performance and allowing companies to use the resources available in their job sites. **MB CRUSHER** has evolved over the years and has become the **benchmark for the construction equipment industry around the world** today. With a full range of products to give companies the solutions that they are looking for.

## MB CRUSHER HAS SOLUTIONS FOR EVERY CARRIER MACHINE

Crushers, screening buckets, shafts screeners, drum cutters, sorting grapples.

**MB CRUSHER** provides entrepreneurs with the widest range of attachments capable of **making construction sites** of any size, **independent and competitive** regardless of the job's nature and scope of action.

All of MB CRUSHER's equipment was designed to solve **all kinds of obstacles**, even the most extreme. From skid steers, backhoes, telehandlers, mini and midi excavators, from 1,3 ton machines to excavators weighing 70 ton; **there will be a suitable MB CRUSHER unit.**

Installation is straightforward and quick, whether it's for the larger machines in the MB range or the small ones.

# 100% MADE IN ITALY

MB Crusher is an **Italian company** with a worldwide presence. All of the equipment's production phases take place at the headquarters in Fara Vicentino, Italy.

More than 45.000 square meters host research and development laboratories, production departments, sales, marketing and administrative offices. Here, every piece of equipment is designed, assembled and distributed to international markets by more than **200 people**. Brazil, China, France, Germany, Japan, India, Russia and United States.

There are 9 subsidiaries abroad that support the headquarters to promote and distribute the products to all continents. And a network of over 230 dealers helps sell MB Crusher's products to **over 150 countries**.



Learn more

## PRODUCTS GUARANTEED AND CERTIFIED QUALITY

Guaranteeing a safe product, that is compliant with international regulations is essential for everyone at MB CRUSHER. All aspects (from assembly to the finished product) are constantly certified, to meet the markets' needs and to **guarantee** the customer receives a product that **is accredited for its good quality**.

### PRODUCT CERTIFICATIONS

<b>UNI EN ISO 9001</b>	<b>CE</b>
Quality Management Systems	Declaration of conformity
<b>TUV</b>	<b>PCT</b>
Safety requirements certificate	International Patent Protection

### PROCESS CERTIFICATIONS

#### RINA CERTIFICATION

Organization with qualified welding processes and personnel

# WITH MB CRUSHER

# YOU CRUSH

# EVEN TIME.

**ONE ATTACHMENT TO WORK  
FASTER AND SAVE MONEY.**



WATCH THE VIDEO

With  
**MB**

**8  
MINUTES**

It is how long  
it takes **FOR  
MB CRUSHER**  
to process the  
material.

**1  
ATTACHMENT**

This is why MB  
CRUSHER's  
units are used  
on many job  
sites around the  
world. Because  
it **replaces 3  
machines** with  
just **one unit**.



The jobsite  
becomes  
**environment-  
friendly:**  
-less CO<sub>2</sub>  
-no landfill  
disposals  
-reduce pollution  
emissions  
from vehicles  
transporting  
**material.**

Without  
**MB**

**4  
HOURS**

is the average  
time to process  
9 tons of material  
**WITHOUT MB  
CRUSHER.**

**3  
VEHICLES  
INVOLVED**

3 are the  
machines involved  
to collect,  
transport and  
process materials  
**WITHOUT MB  
CRUSHER.**



# BEFORE/AFTER



## MB CRUSHER'S IMPACT ON DIFFERENT MATERIALS

MB CRUSHER units transform waste directly on the job site and allow you to independently recover and recycle material.

### BUILDING OR CONSTRUCTION MATERIALS

Demolition waste  
Excavated soil  
Asphalt  
Reinforced concrete  
Bricks



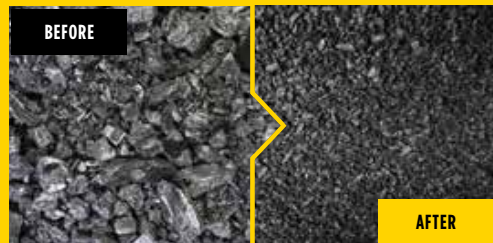
### ROCKS

Coal  
Porphyry  
Limestone  
Granite  
Basalt  
Marble  
River Stone  
Calcium carbonate-gypsum



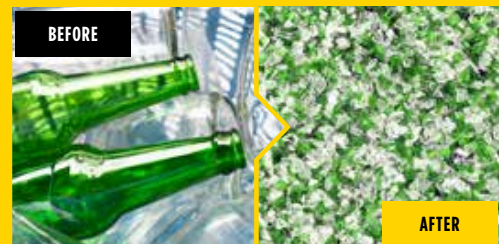
### ORGANIC MATERIALS

Foliage  
Sand and soil



### FOUNDRY WASTE AND METALS

Casting mold waste and slag  
Foundry sand  
Copper slag  
Iron  
Steel and aluminium slag



### WASTE

Garbage  
Nylon and plastic  
Bituminous waste  
Glass  
Ceramics



### POLES AND COLUMNS

Concrete slabs  
Concrete pipes  
Gratings  
Vineyard poles  
Light poles  
Railway sleepers

DON'T SEE YOUR MATERIAL?

**CONTACT US**





# MB SCREENING BUCKETS



FIND OUT MORE

FOR EXCAVATORS, BACKHOES AND LOADERS

≥ 6 ≤ 50 ton



**OPTIMAL SIZE**

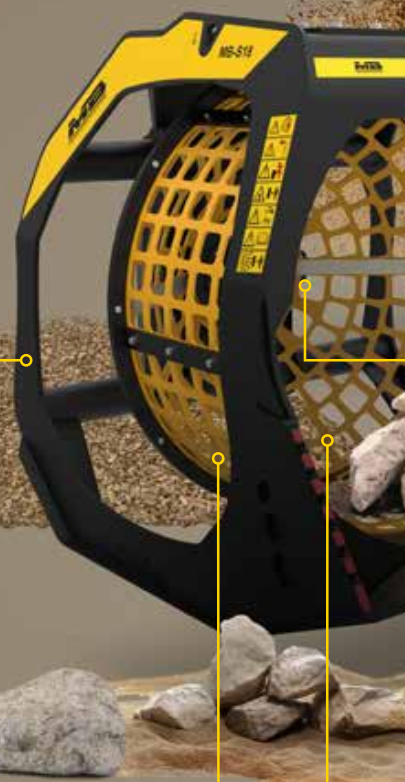
designed to pick up and process material with ease.

Installed on the carrier machine, MB screening buckets are the ideal tool to select and screen inert material, both before and after the crushing phase. Crucial in all situations where different size materials are necessary.



**CHANGE SCREENING PANELS**

quick and easy.



## APPLICATION AREAS



MINES



DEMOLITIONS



MAINTAINING LANDSCAPE AND AGRICULTURAL AREAS



URBAN CONSTRUCTION SITES



TUNNELS



ROAD WORKS



QUARRIES



RECYCLING AGGREGATES



PIPELINES



ENCLOSED SPACES



EXCAVATIONS



FOUNDRIES



FOREST MAINTENANCE



UNDERWATER WORKS

## ACCESSORIES

24 MONTH WARRANTY



HOUR METER



BASKET PROTECTION KIT



DUST SUPPRESSION KIT





## LOADING STRAIN CONTROL SYSTEM

A device that reduces stress on the machine while loading material.



## MAINTENANCE

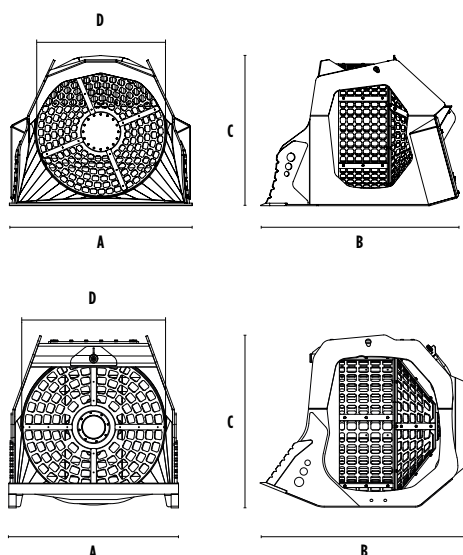
simple, fast, and centralized.



## HIGH PRODUCTION

Thanks to the cone-shaped basket depth and size.

## DIMENSIONS



## MODELS



	UNITS	MB-LS170 S2	MB-LS220 S2	MB-S10 S4	MB-S14 S4	MB-S18 S4	MB-S23 S4
Recommended excavator	ton	-	-	$\geq 6 \leq 9$	$\geq 9 \leq 20$	$\geq 20 \leq 35$	$\geq 35 \leq 50$
Recommended backhoe loader	ton	$\geq 8 \leq 15$	-	$*\geq 8 \leq 9$	-	-	-
Recommended loader**	ton	$\geq 8 \leq 15$	$\geq 15 \leq 25$	-	-	-	-
Weight	ton	1,45	2,80	0,41	1,10	2,00	3,66
Load capacity	m <sup>3</sup>	1,10	2,40	0,32	1,10	2,40	3,75
Pressure	PSI	> 160	> 200	> 130	> 150	> 200	> 320
Back pressure	PSI	< 40	< 40	< 40	< 40	< 40	< 5
Oil flow rate***	l/min	80	120	40	60	120	160
Basket diameter	mm	1200	1600	800	1200	1600	1970
Basket depth	mm	900	1225	555	900	1225	1490
Size A	mm	1865	2180	950	1400	1840	2320
Size B	mm	1670	2355	1220	1700	2260	2840
Size C	mm	1380	1790	1010	1440	1870	2350
Size D	mm	1200	1600	800	1200	1600	1970

\* Rear.

\*\* See legal regulations on loading and tipping UNI ISO 14397 - 1:2008

\*\*\* The hydraulic flow rate values must be met alongside the required operating pressure.